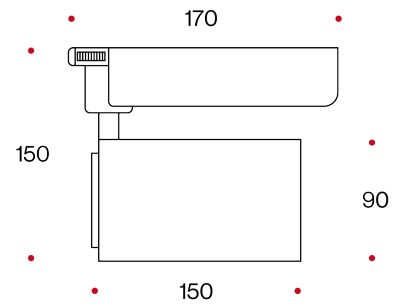


# MAXITU



Track-mounted adjustable projector with multiple ignition adapter and LED COB included. Body in painted aluminium. Reflector with 99,9% pure aluminium bright finishing. Complete with driver box in painted die-cast aluminium. Adjustable on the horizontal plane 350° and on the vertical plane 90°.

Track-mounted adjustable projector with multiple ignition adapter and LED COB included. Body in painted aluminium. Reflector with 99,9% pure aluminium bright finishing. Complete with driver box in painted die-cast aluminium. Adjustable on the horizontal plane 350° and on the vertical plane 90°.

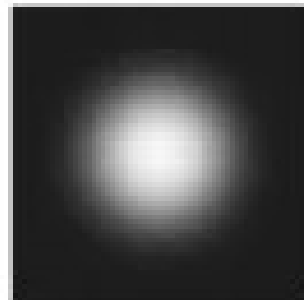
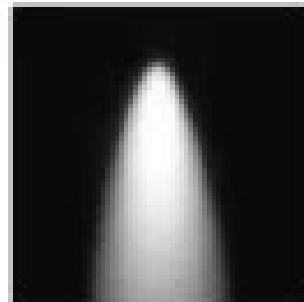


1,2 KG

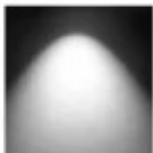






POWER SUPPLY  
220/240V-50/60Hz

## ACCESSORI / ACCESSORIES





Ref. Beam SPOT

**Refl. Beam Medium****Refl. Beam Large**

| CODE   | LUMEN NOM |    |        |        | HOLE DIMENSIONI | DIMENSIONS A-B mm |
|--|-----------|----|--------|--------|-----------------|-------------------|
|  | LED       | W  | 3000°K | 4000°K |                 |                   |
| 57325R   | COB       | 25 | 3770   | 3900   | 150X150         | 150X150           |
| 57340R   | COB       | 40 | 5420   | 5600   | 150X150         | 150X150           |

**■ COLOR CODE**

-  **32** - frosted white
-  **33** - frosted black

**• LED COLOR CODE****3000°K**- 85**4000°K**- 85**▲ REFLECTOR CODE****15°** - REFLECTOR BEAM**38°** - REFLECTOR BEAM**60°** - REFLECTOR BEAM